

# AUTO875 Datasheet

PRESSURE REGULATOR FOR  
HYDROGEN FUEL CELL PASSENGER VEHICLES



Gas  
  Liquid  
  Diaphragm  
  Piston  
  Self-Venting  
  Non-Venting  
 Max Inlet: 875 bar (12,690 psi)  
 Max Outlet: 20 bar (290 psi)  
 Cv 0.5



Note: Regulator shown is AUTO438.

## INTRODUCING THE AUTO875...

The AUTO875 is a high-pressure, piston-sensed pressure regulator with a solid disk design, designed specifically for Hydrogen fuel cell passenger vehicles. With a **balanced main valve** as standard it offers stable control of outlet pressures up to 20 bar (290 psi) from a maximum 875 bar (12,690 psi) inlet pressure.

In addition to critical safety features such as its double o-ring backup, the AUTO875 offers convenient access to the seat cartridge in the base of the regulator for simplified servicing.

## SPECIFICATION

Max. Rated Inlet Pressure	875 bar (12,690 psi)
Outlet Ranges	Up to 20 bar (290 psi)
Design Proof Pressure	150% max. working pressure
Seat Leakage	In accordance with ANSI/FCI 70-3
Weight	2.7kg (5.95lbs)

\* Pressure regulator rating may be limited by connection type, Cv and/or seat material

## STANDARD MATERIALS OF CONSTRUCTION

PART	MATERIALS
Body	AISI 316/316L Stainless Steel (UNS S31600/S31603)
Main Valve Pin	AISI 316/316L Stainless Steel (UNS S31600/S31603)
Seat	Tecasint®
Valve Spring	Elgiloy® (UNS R30003)
Piston	AISI 316/316L Stainless Steel (UNS S31600/S31603)
O-Rings	EPDM
Loading Spring	AISI 316/316L Stainless Steel (UNS S31600/S31603)
Filter	30 Microns

## FEATURES AND BENEFITS

### 1 DOUBLE O-RING

Safety back-up in the event of primary o-ring failure during use.

### 2 EASY ACCESS TO SEAT CARTRIDGE

Simplified servicing through the base of the regulator.

### 3 THREE OPTIONAL MOUNTING ARRANGEMENTS

To suit users application/set-up.

### 4 IN-LINE LEAKAGE SENSE LINE

Easy to connect pipework to sense for H2 leakage, and makes set point anti-tamper proof.

Product availability and specifications contained herein are subject to change without notice. Consult local distributor or factory for potential revisions and/or service related issues. Pressure Tech Ltd support with product selection recommendations only - it is the users responsibility to ensure the product is suitable for their specific application requirements.



DESIGNED AND BUILT IN THE UK

### PRESSURE TECH LTD

Unit 24, Graphite Way, Hadfield, Glossop, Derbyshire, UK, SK13 1QH  
 T +44 (0)1457 899 307  
 E sales@pressure-tech.com  
 W www.pressure-tech.com

170920

PAGE:  
1 OF 4

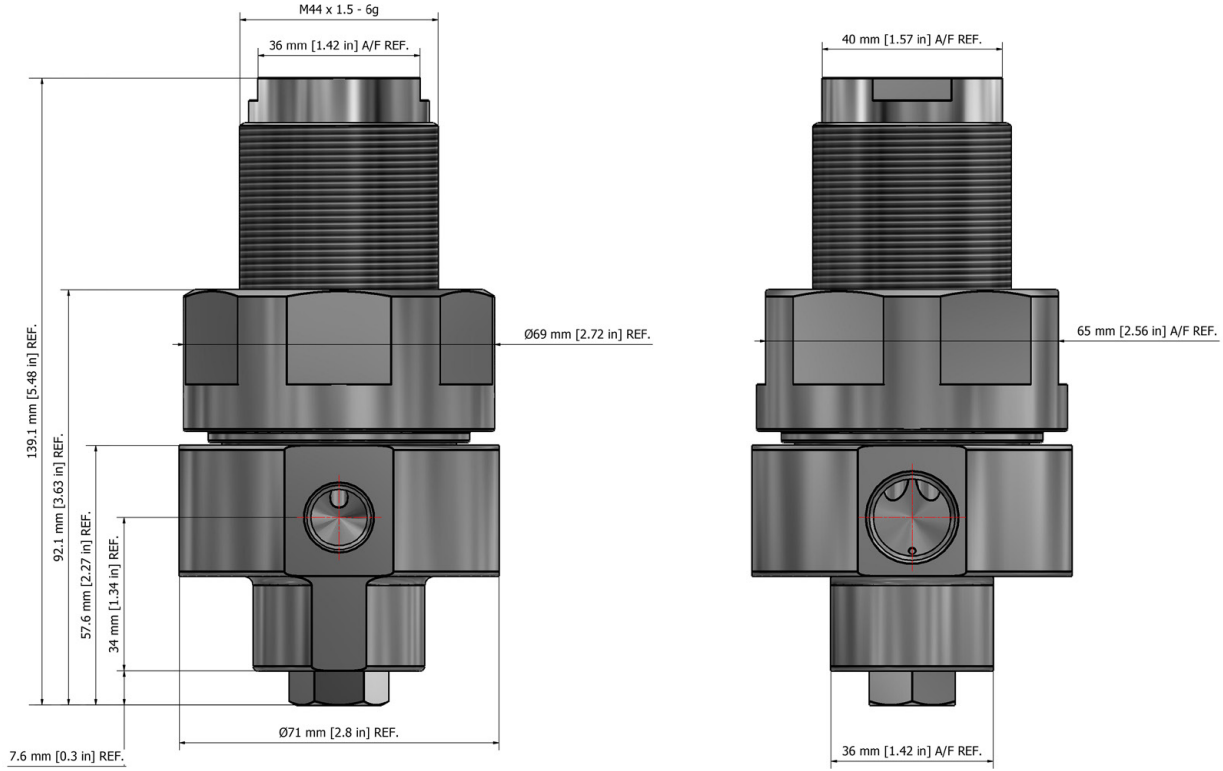
# AUTO875 Datasheet

PRESSURE REGULATOR FOR  
HYDROGEN FUEL CELL PASSENGER VEHICLES



● Gas ● Liquid | 
 ● Diaphragm ● Piston | 
 ● Self-Venting ● Non-Venting | 
 Max Inlet: 875 bar (12,690 psi) | 
 Max Outlet: 20 bar (290 psi) | 
 Cv 0.5

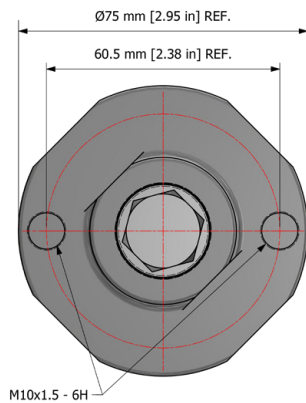
## DRAWINGS AND INSTALLATION DIMENSIONS



## MOUNTING CONFIGURATION OPTIONS

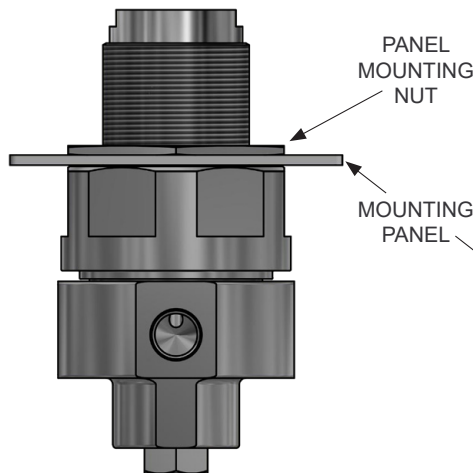
### 1. Body Mounting

Uses the two bolt holes at the bottom of the body for mounting.



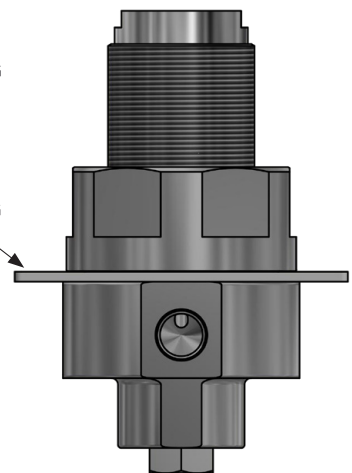
### 2. Bonnet Mounting

Mounting panel is secured between the body and bonnet with a panel mounting nut.



### 3. Head-Work Mounting

Mounting panel is secured between the body and head-work.



Product availability and specifications contained herein are subject to change without notice. Consult local distributor or factory for potential revisions and/or service related issues. Pressure Tech Ltd support with product selection recommendations only - it is the users responsibility to ensure the product is suitable for their specific application requirements.



DESIGNED AND BUILT IN THE UK

### PRESSURE TECH LTD

Unit 24, Graphite Way, Hadfield, Glossop, Derbyshire, UK, SK13 1QH  
 T +44 (0)1457 899 307  
 E sales@pressure-tech.com  
 W www.pressure-tech.com

170920

PAGE:  
2 OF 4

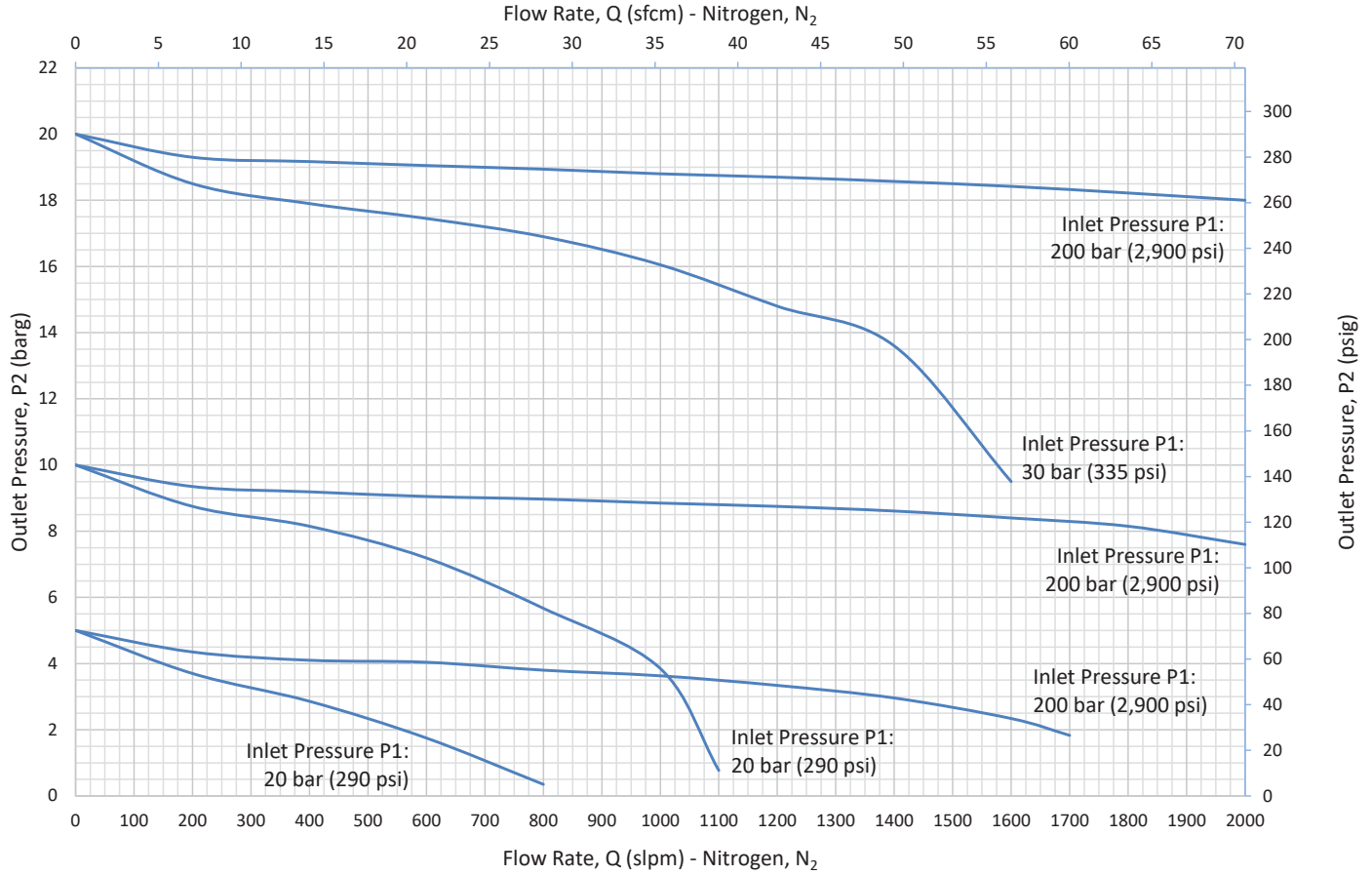
# AUTO875 Datasheet

PRESSURE REGULATOR FOR  
HYDROGEN FUEL CELL PASSENGER VEHICLES

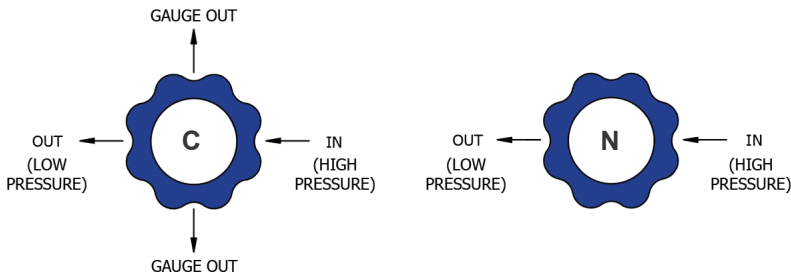
**PRESSURE TECH**

Gas  
  Liquid  
  Diaphragm  
  Piston  
  Self-Venting  
  Non-Venting  
 Max Inlet: 875 bar (12,690 psi)  
 Max Outlet: 20 bar (290 psi)  
 Cv 0.5

## FLOW CURVE



## PORTING CONFIGURATIONS



Product availability and specifications contained herein are subject to change without notice. Consult local distributor or factory for potential revisions and/or service related issues. Pressure Tech Ltd support with product selection recommendations only - it is the users responsibility to ensure the product is suitable for their specific application requirements.



DESIGNED AND BUILT IN THE UK

### PRESSURE TECH LTD

Unit 24, Graphite Way, Hadfield, Glossop, Derbyshire, UK, SK13 1QH  
 T +44 (0)1457 899 307  
 E sales@pressure-tech.com  
 W www.pressure-tech.com

170920

PAGE:  
3 OF 4

# AUTO875 Datasheet

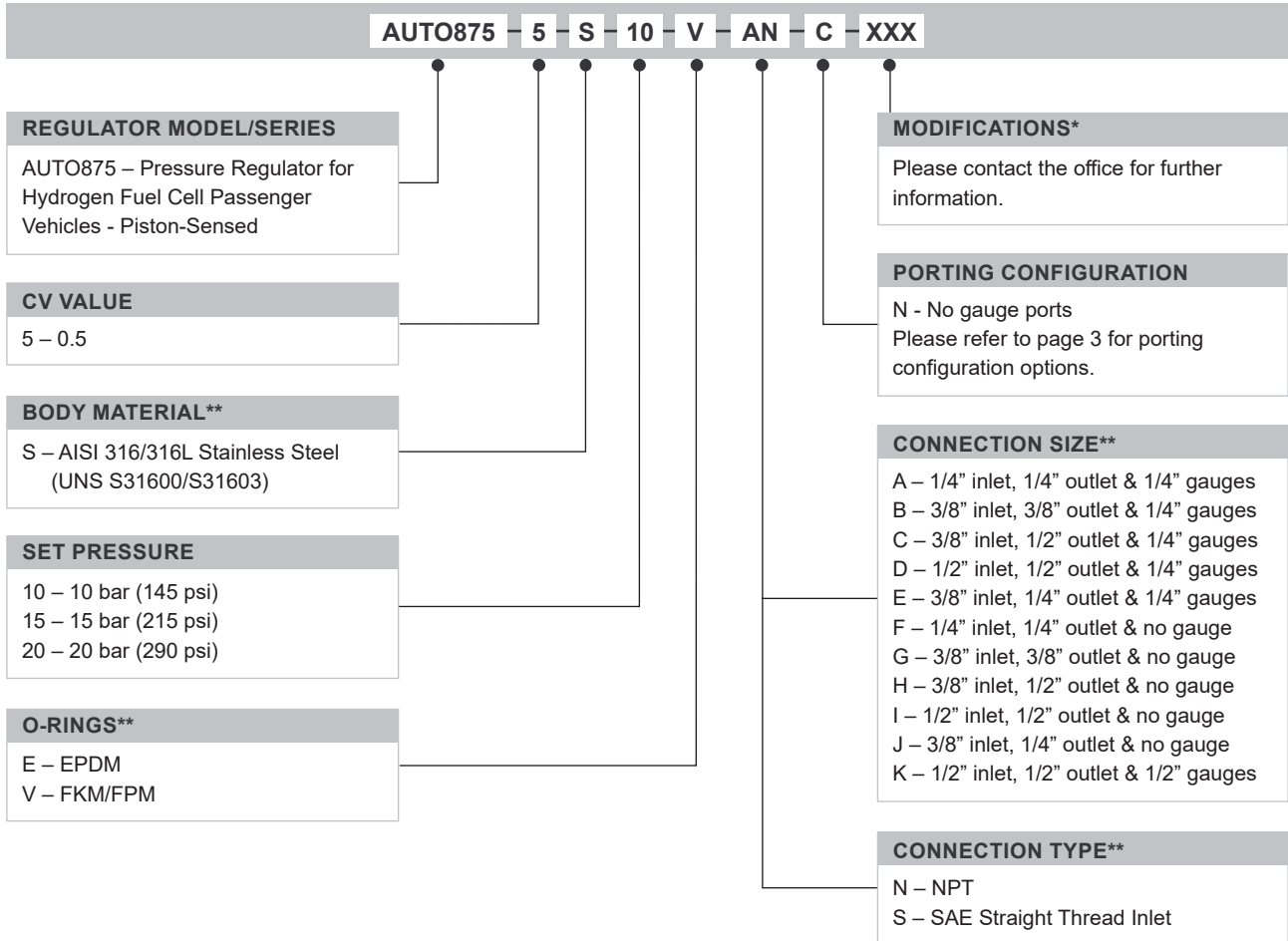
PRESSURE REGULATOR FOR  
HYDROGEN FUEL CELL PASSENGER VEHICLES



Gas  
  Liquid  
  Diaphragm  
  Piston  
  Self-Venting  
  Non-Venting  
 Max Inlet: 875 bar (12,690 psi)  
 Max Outlet: 20 bar (290 psi)  
 Cv 0.5

## ORDERING INFORMATION

To build a Pressure Tech part number, simply combine the characters identified below in sequence:



OPTIONAL EXTRAS		
	PART NUMBER	DESCRIPTION
Service Kit	SRK-MF101-05-B...	Various 'Balanced' options available

*Note:*  
Ancillary equipment also available

**TRADEMARKS:** Inconel® is a registered trademark of Inco Alloys International  
Tecasint® is a registered trademark of Ensinger GmbH

\* Where applicable  
\*\* Other options may be available - please contact the office

Product availability and specifications contained herein are subject to change without notice. Consult local distributor or factory for potential revisions and/or service related issues.  
Pressure Tech Ltd support with product selection recommendations only - it is the users responsibility to ensure the product is suitable for their specific application requirements.



DESIGNED AND BUILT IN THE UK

**PRESSURE TECH LTD**  
Unit 24, Graphite Way, Hadfield, Glossop, Derbyshire, UK, SK13 1QH  
T +44 (0)1457 899 307  
E sales@pressure-tech.com  
W www.pressure-tech.com

170920

PAGE:  
4 OF 4